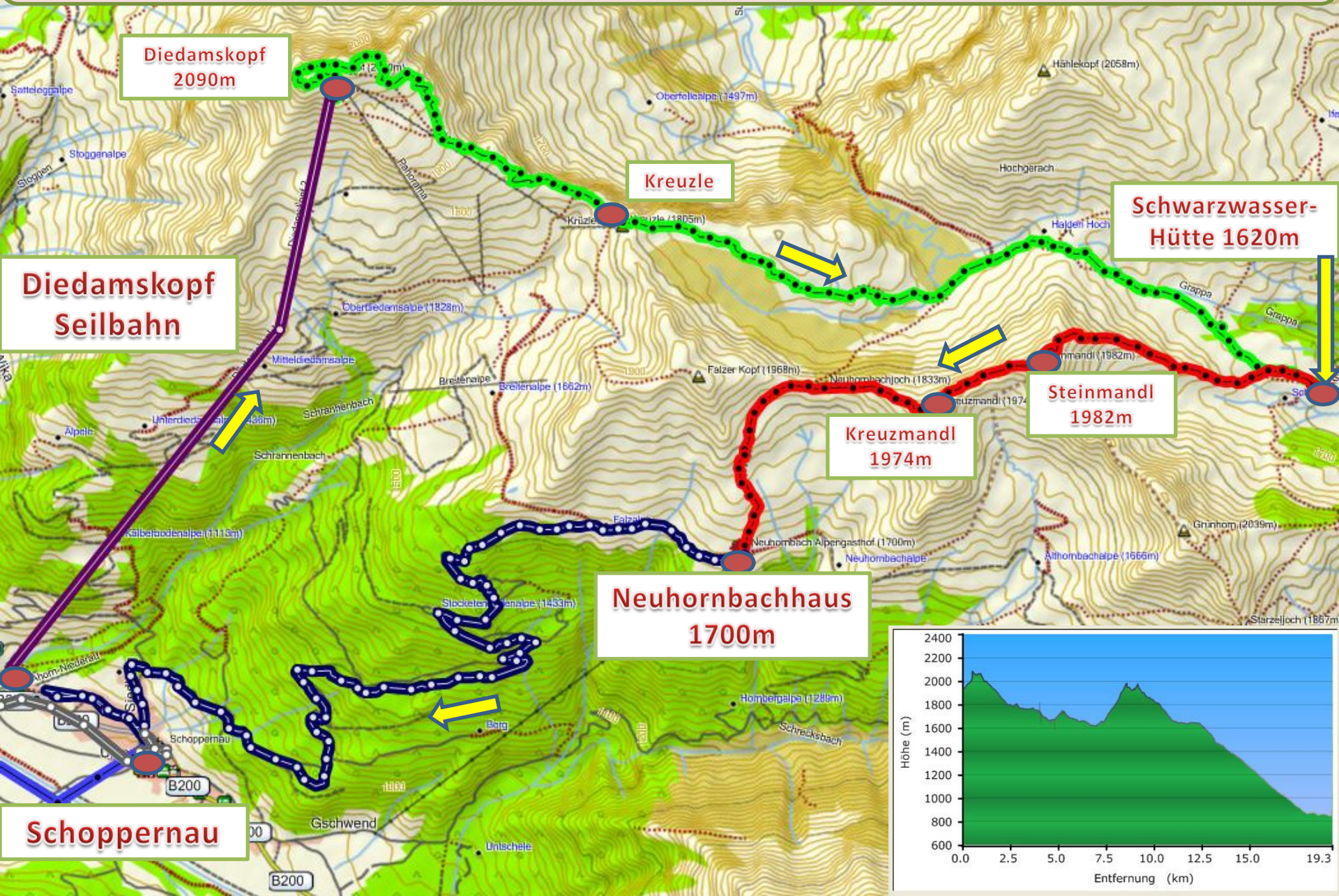


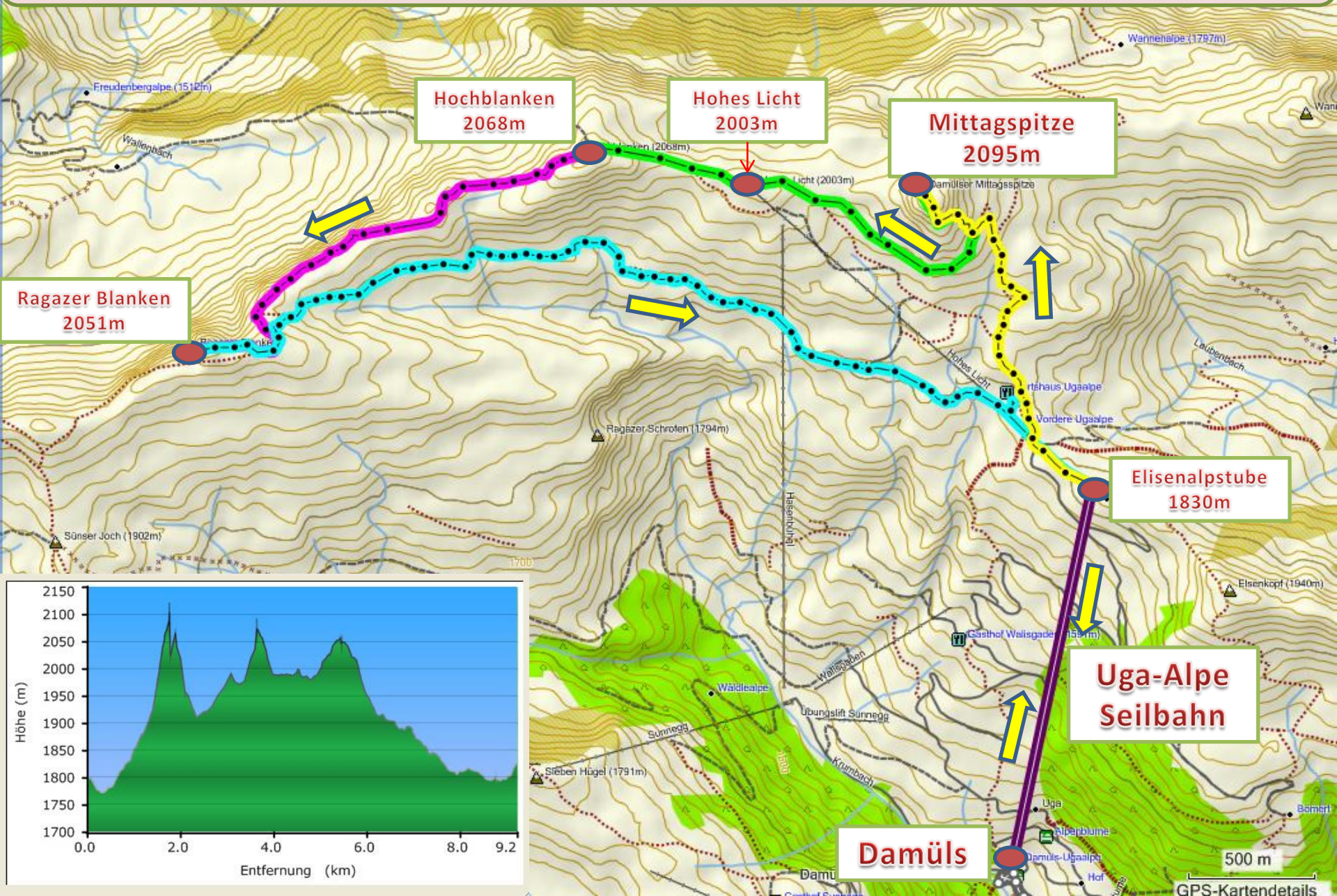
# Bergwoche Bregenzerwald - 11. bis 17. Sept. 2011



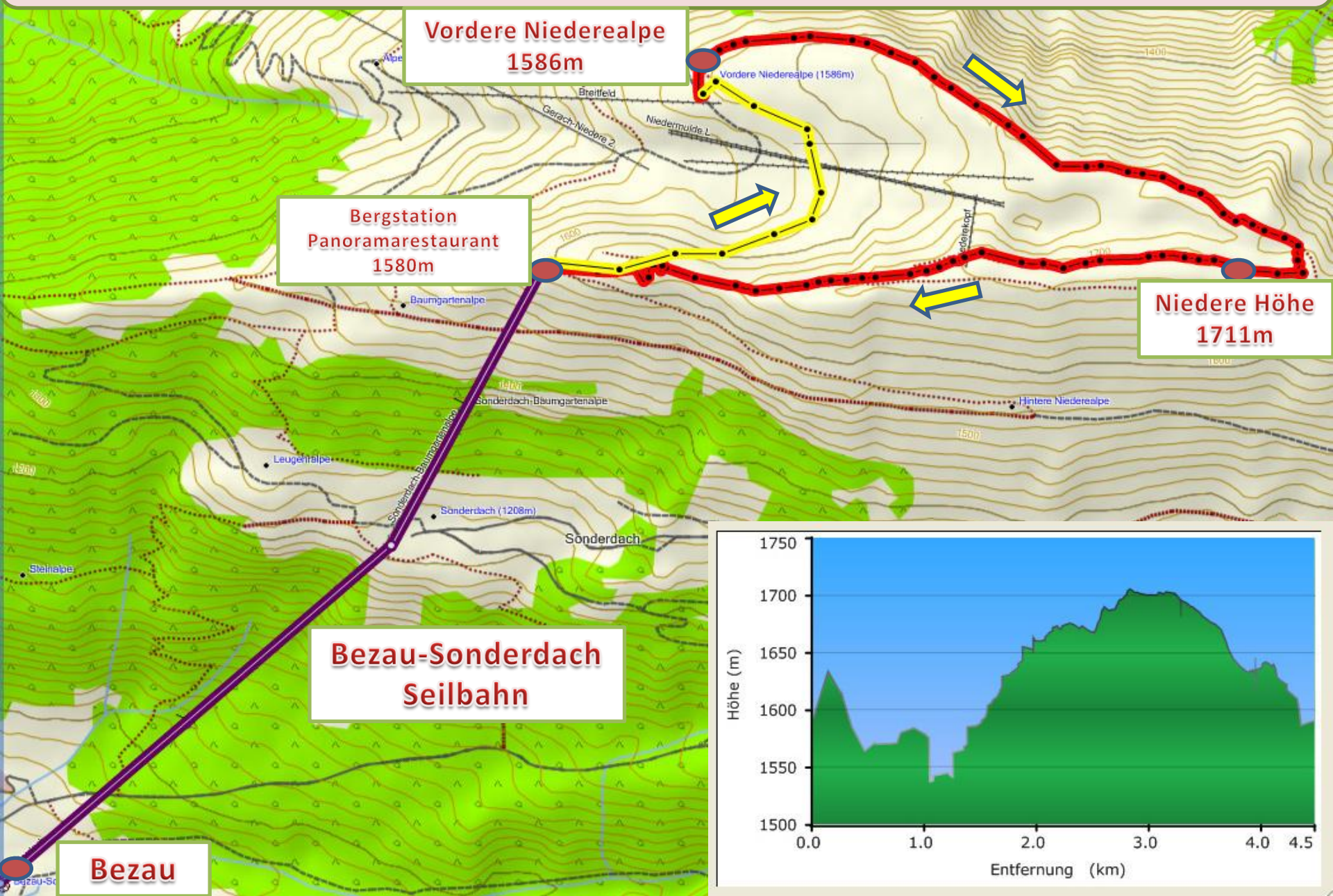
# 1.Tag - Diedamskopf ~19 km/~700 Hm



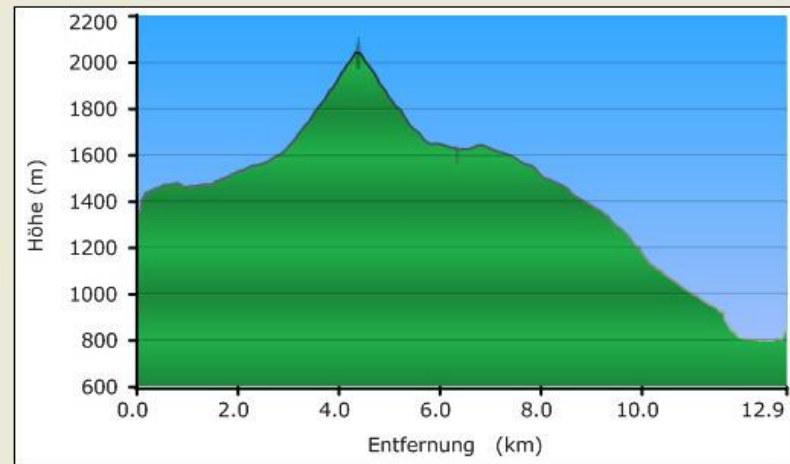
# 2.Tag – Damüls ~9 km/~750 Hm



# 3.Tag – Bezau ~4,5 km/~200 Hm



# 4.Tag – Mellau ~13 km/~700 Hm



**Mellau  
Seilbahn**

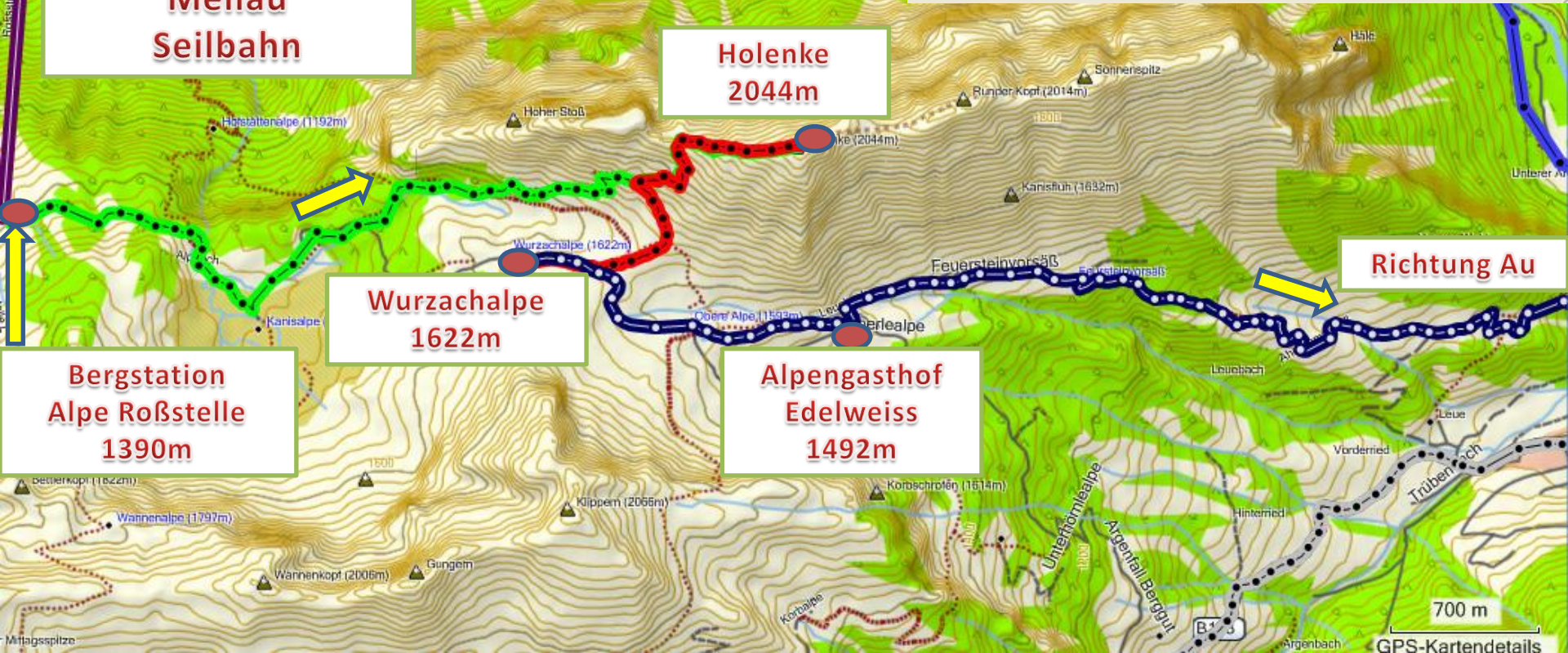
**Holenke  
2044m**

**Wurzachalpe  
1622m**

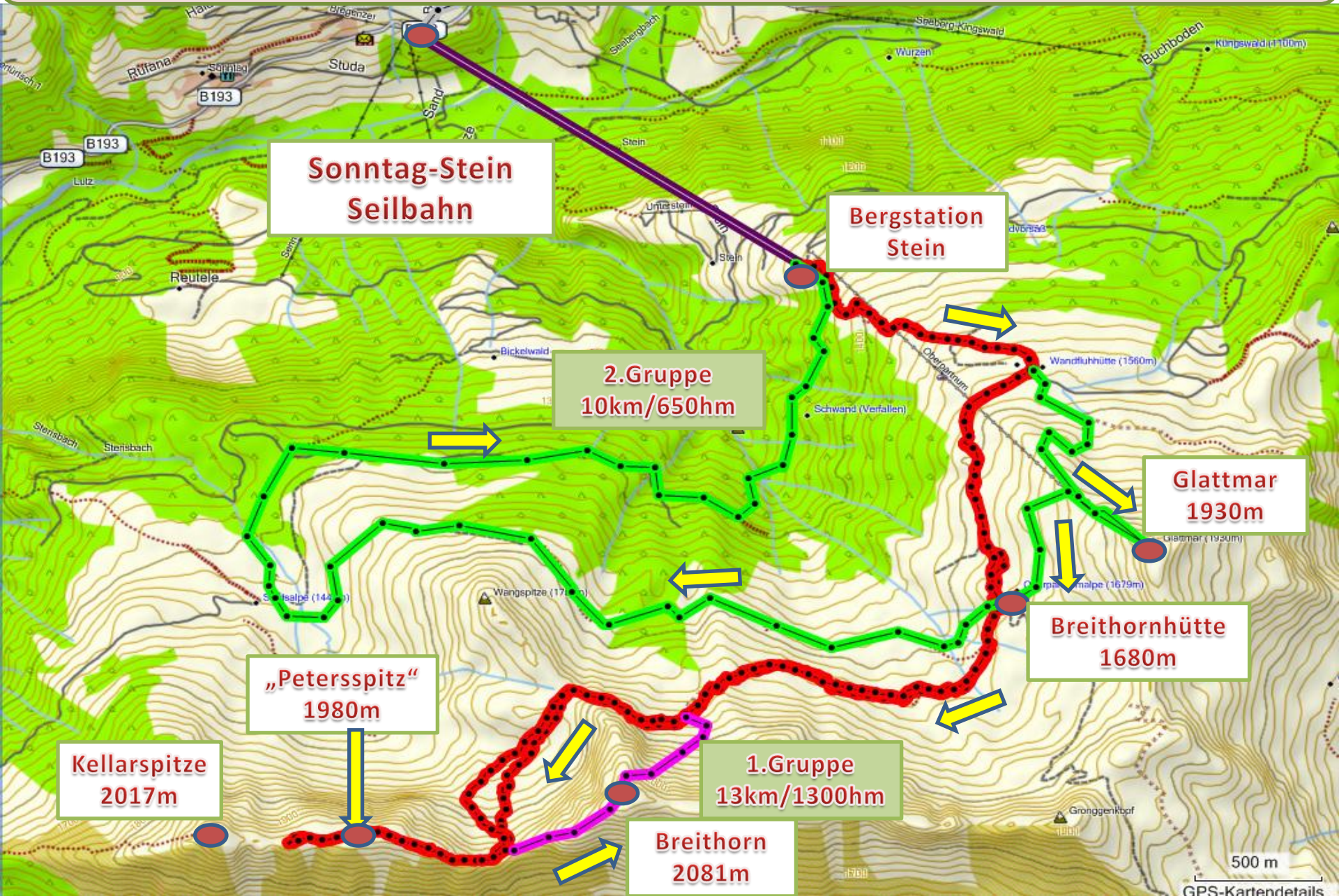
**Bergstation  
Alpe Roßstelle  
1390m**

**Alpengasthof  
Edelweiss  
1492m**

**Richtung Au**



# 5.Tag – Sonntag-Stein ~13 km/~1300 Hm



Sonntag-Stein  
Seilbahn

Bergstation  
Stein

2.Gruppe  
10km/650hm

Glattnar  
1930m

Breithornhütte  
1680m

„Petersspitz“  
1980m

Kellarspitze  
2017m

1.Gruppe  
13km/1300hm

Breithorn  
2081m

500 m

GPS-Kartendetails